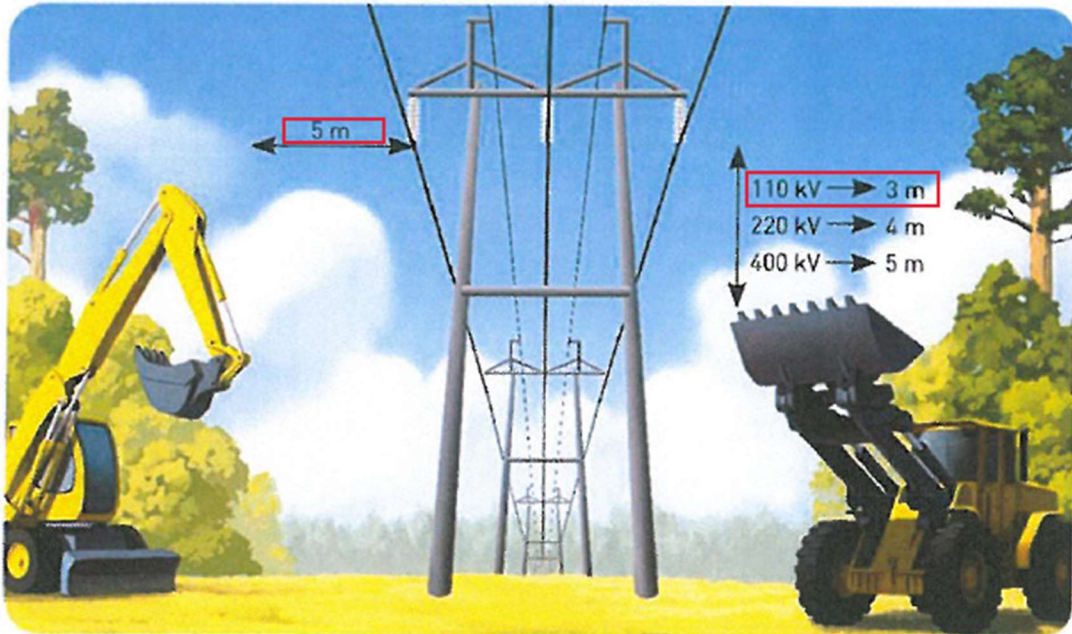


SAFE USE OF MACHINERY NEAR OVERHEAD LINES

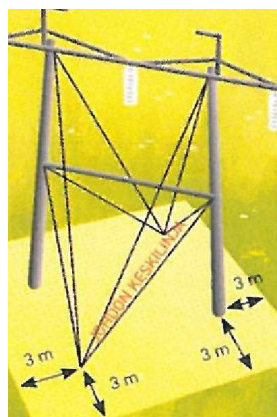
Do not work dangerously close to live overhead lines!

If you are using an excavator, crane or other machinery or handling long objects near an overhead line, make sure that you do not, even by accident, end up too close to the live conductors. The picture and table below present the permitted minimum distances of machinery including load from the phase conductors of a transmission line.

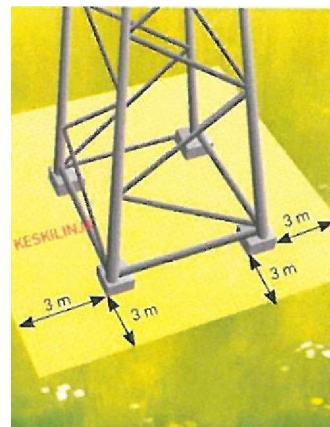


Voltage level kV	Lenght of insulator string	Number of insulator discs
110	approx. 1 metre	6–8
220	approx. 2 meters	10–12
400	approx. 4 meters	18–21

The tower area of the transmission line extends to 3 meters from the pole foundations and guy wire constructions. Newer drive machinery between the tower legs, under a guy wire, or closer than 3 metres from the tower structures. Also, excavation or back-filling in this area is prohibited.



Guyed two-pole tower



Free-standing lattice tower

If Herrfors Nät-Verkko overhead line or its tower are damaged during work, please report this as soon as possible to Volue Grid Control Centre, tel 029 020 9502 or Herrfors Nät-Verkko Grid Control Centre, tel 044 781 5305.